

1

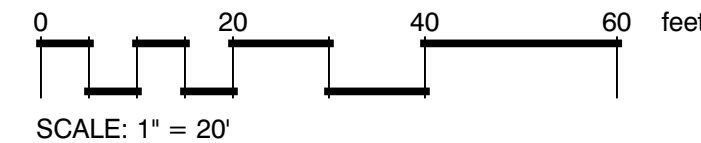
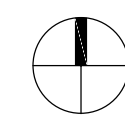
PAVER DISTURBANCE TO BE MINIMIZED
AND RESTORATION TO BE DONE WITH
EXCAVATABLE FLOWABLE FILL BACKFILL.

PAVER DISTURBANCE TO BE MINIMIZED
AND RESTORATION TO BE DONE WITH
EXCAVATABLE FLOWABLE FILL BACKFILL.

AS PER CITY ORDINANCE(S) §50.02(A) (4)
AND §100.35(E), THAT LANDSCAPING
MATERIALS OTHER THAN SOD ARE NOT
ALLOWED WITHIN (5') FIVE FEET OF ANY
PORTION OF CITY OWNED UTILITIES
WITHIN THE PUBLIC STREET
RIGHT-OF-WAY INCLUDING METERS,
HYDRANTS, SERVICE LINES ETC. ALSO,
PLEASE NOTE THAT NO TREES,
SHRUBBERY OR OBSTRUCTION SHALL BE
PLACED WITHIN A 3' RADIUS OF A
CITY-OWNED SEWER LATERAL CLEANOUT
OR WATER &/OR REUSE METER.

TREE DISPOSITION PLAN

SCALE: 1" = 20'-0"



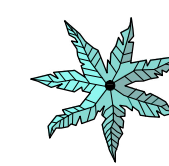
SCALE: 1" = 20'

PLANT SCHEDULE

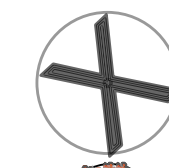
SYMBOL	CODE	QTY	BOTANICAL NAME	COMMON NAME
TREES				
	AM	2	Adonidia merrillii	Christmas Palm- DOUBLE
	CD	1	Coccoloba diversifolia	Pigeon Plum
	CE	12	Conocarpus erectus	Green Buttonwood
	CS2	4	Conocarpus erectus 'Sericeus'	Silver Buttonwood
	CS	7	Cordia sebestena	Orange Geiger Tree
	PM	1	Phoenix dactylifera 'Medjool'	Medjool Date Palm
	SS	13	Sabal palmetto	Cabbage Palmetto
	TR	6	Thrinax radiata	Florida Thatch Palm
SHRUBS				
	PB	8	Plumeria pudica 'Bridal Bouquet'	Frangipani
	SM	24	Suriana maritima	Bay Cedar
	YE	11	Yucca elephantipes	Soft Spine Yucca
SHRUB AREAS				
	AD	152	Alternanthera dentata	Little Ruby
	CH	80	Chrysobalanus icaco	Cocoplum
	CG	163	Clusia guttifera	Small leaf Clusia
	EH	46	Equisetum hyemale	Horsetail
	EL	351	Ernodea littoralis	Golden Creeper
	FG	46	Ficus microcarpa 'Green Island'	Green Island Ficus
	HD	349 sf	Helianthus debilis	Dune Sunflower
	HL	99	Hymenocallis latifolia	Spider Lily
	LM	32	Liriope muscari	Lilyturf
	MC	180	Muhlenbergia capillaris	Pink Muhly
	PD	212	Panicum amarum	Bitter Panicgrass
	PG	202	Portulaca grandiflora	Purslane
	US	1,426	Uniola paniculata	Sea Oats
	ZP	118	Zamia pumila	Coontie
GROUND COVERS				
	IP	562 sf	Ipomoea pes-caprae	Beach Morning Glory
	PV	91 sf	Paspalum vaginatum	Seashore Paspalum
SEE SHEET L-2.1 FOR COMPLETE PLANT LIST SPECIFICATION				

ALL HEDGES ABUTTING CITY RIGHTS OF WAY ARE MAINTAINED AT A HEIGHT NO GREATER THAN 24"

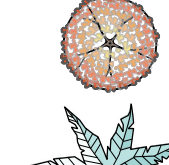
EXISTING TREE KEY



EX. PALM
Existing Palm



EX TREE REMOVE
Existing Tree to REMOVE



EX TREE TRANSPLANT



EX. PALM TRANSPLANT

LANDSCAPE SHEET INDEX

SITE PLAN APPROVAL
LANDSCAPE SHEET INDEX
L-0.1 LANDSCAPE INDEX RENDERING
L-1.0 TREE DISPOSITION PLAN
L-2.0 LANDSCAPE PLAN
L-2.1 PLANT LIST SPECIFICATION
L-2.2 LANDSCAPE NOTES
L-3.0 LANDSCAPE DETAILS
L-3.1 LANDSCAPE DETAILS
IR-1.0 IRRIGATION PLANS
IR-5.0 IRRIGATION DETAILS



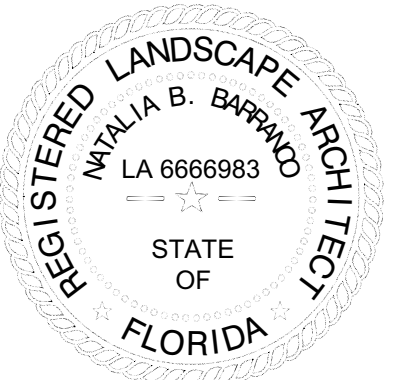
REVISIONS

DATE: 1/24/2024
COMM: 22019

580 BRINY AVE.

580 BRINY AVE.
POMPANO BEACH, FL

Natalia Barranco
c=US, sn=Barranco,
givenName=Natalia, email=natalia@b-
ria.com, cn=Natalia Barranco
2024.08.18 22:22:00 -04'00'



LANDSCAPE INDEX
RENDERING
SITE PLAN APPROVAL

L-0.1

AAC

PZ24-12000003

11/05/2024